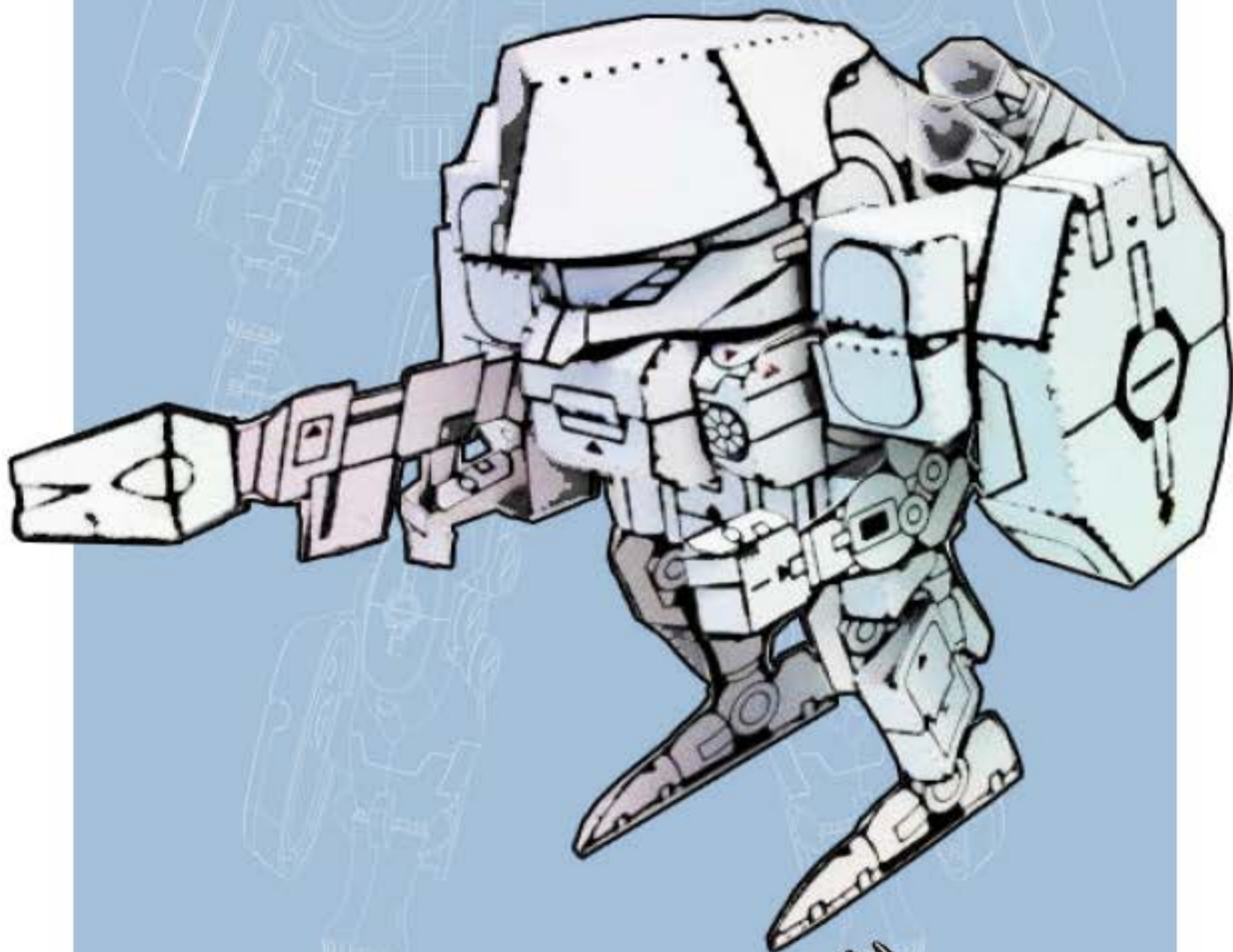


# ARMARAUDERS

## BELLEROPHON PAPER CUSTOM





### GETTING STARTED

To get started you're going to need the right supplies. You don't need anything fancy but having some basics is going to make your life a lot easier. Start out by printing out your template on card stock paper. The type you get at most office supply stores is likely to be about 110 weight and that will do nicely. Regular printer paper will be too thin and your model will be very fragile and have trouble holding itself up. For your tools, this is what I use:

**Cutting Mat** - A good cutting mat will give you a place to work, protect your table, and can extend the life of your blades a bit.

**Utility/Craft Knife** - I use a Utility knife because blades are plentiful and easy to swap out, but a Craft Knife is great too. Just get lots of blades so that you can always have a super sharp edge.

**Butter Knife** - A Butter knife?? Yes! I use it upside down to score the fold lines and get nice sharp creases. It can also slide into spots that fat fingers can't easily reach.

**Ruler** - It doesn't need to be large but a good ruler will help you score the fold lines nice and straight. Get a metal one if you want to cut on the straight edge as well.

**Fast Drying Glue** - You'll want a glue with a narrow applicator tip that will dry within a few seconds (10ish) so that you don't spend all day holding your parts together.

**Paper Clip** - (Not shown) An unfolded Paper Clip is great for reaching into tiny places that fingers can't go or for folding over tiny tabs precisely. It's like having an extra tiny finger.





### PRO TIPS

You may find some techniques that work for you, and if so that's great! If you're a beginner to paper crafting then here are a few tips and tricks that I've found that help me with putting together paper craft kits.



When using a ruler and butter knife to score, put the knife on the line first then line up the ruler. Also position the ruler so it's flat on the paper. This one has to be upside down to be flat!



Use the flat of the knife to reach in and push tabs you can't get at with your fingers or to hold down tabs on one side while you push with fingers or paper clip on the other.



The flat of the butter knife can also be used to smash down tabs when you need a really sharp crease or a fold that doubles on itself.



Using the paper clip to reach inside of places that your fingers can't to push on tabs that you can't reach or that are too small to push properly.



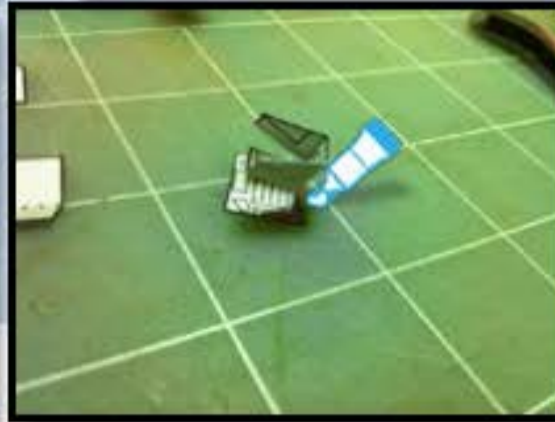
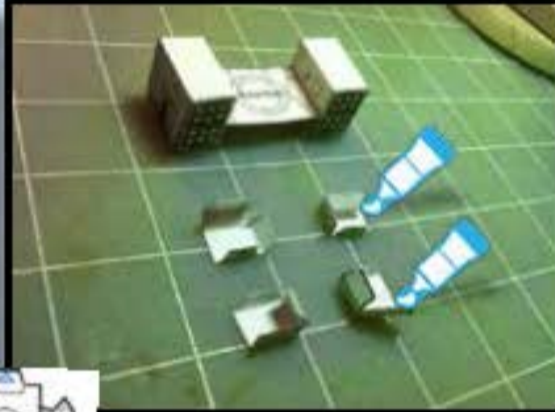
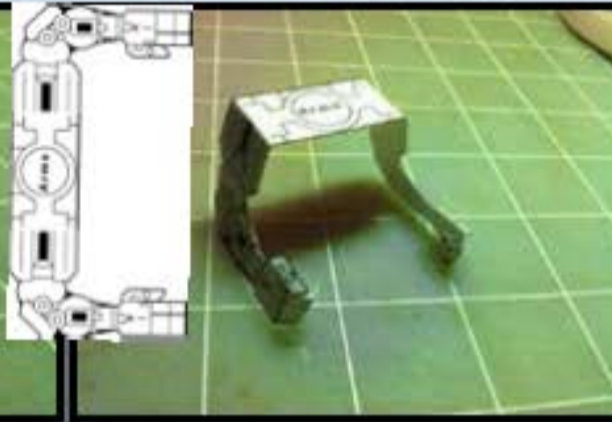
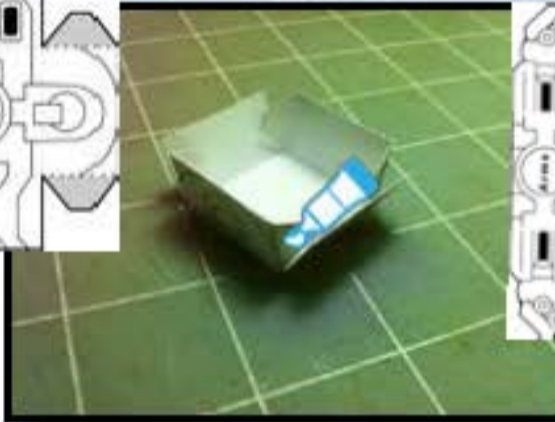
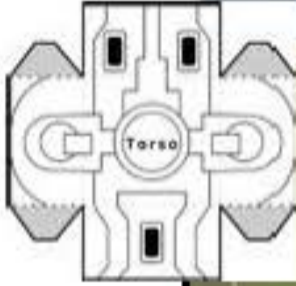
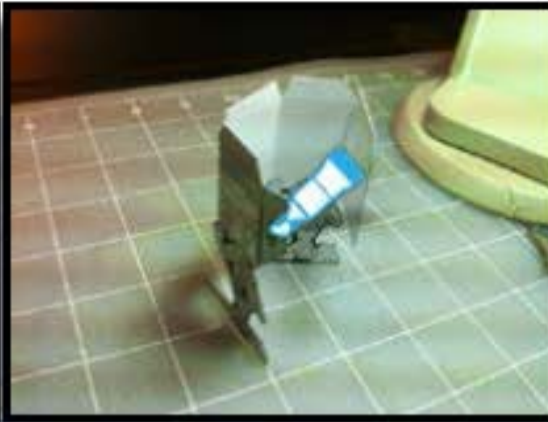
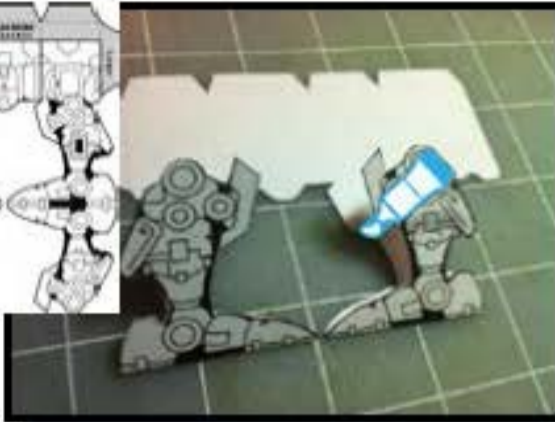
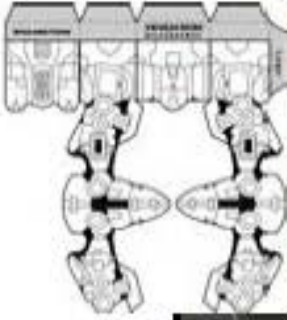
The edge of your utility knife is a great way to fold over tabs. Especially tiny ones or ones on the end of long thin parts.



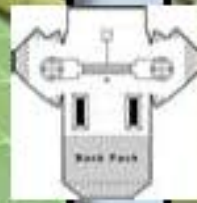
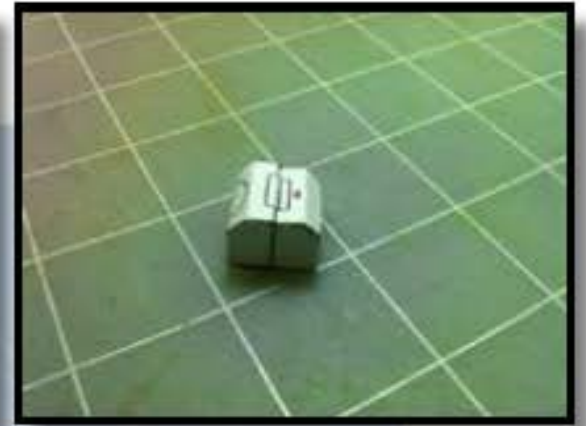
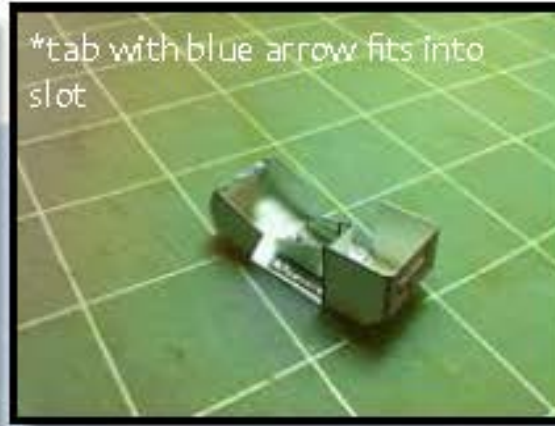
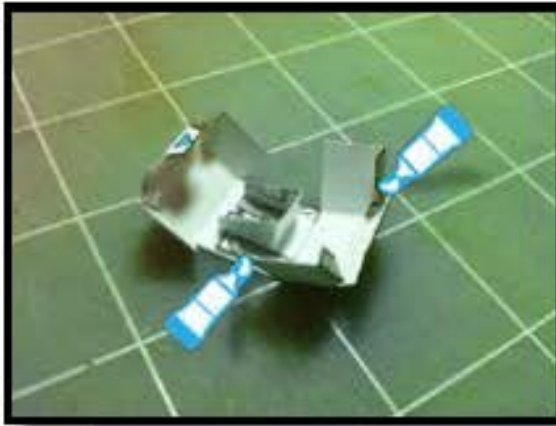
Squash boxes flat when glueing that first tab to keep everything lined up nicely. Then unsquash to glue the rest of the tabs, just be careful with your glue!



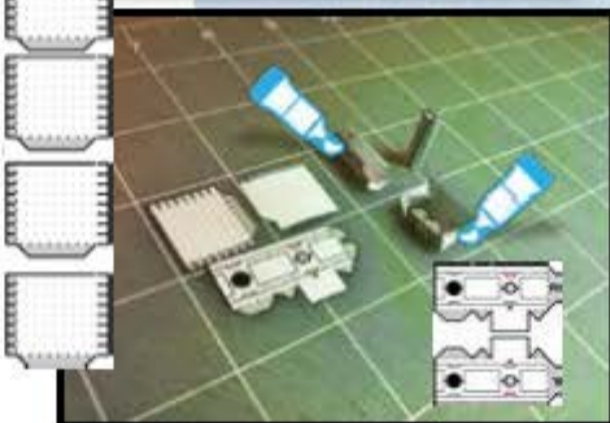
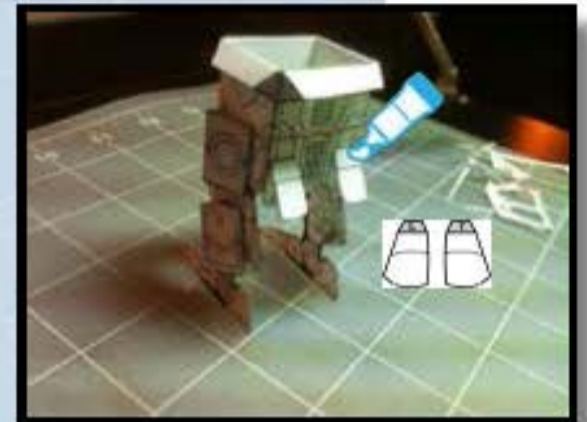
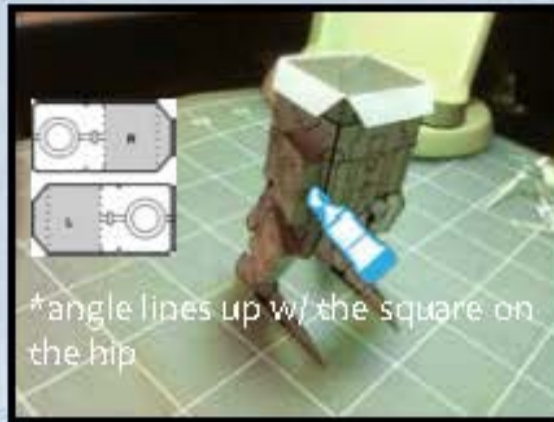
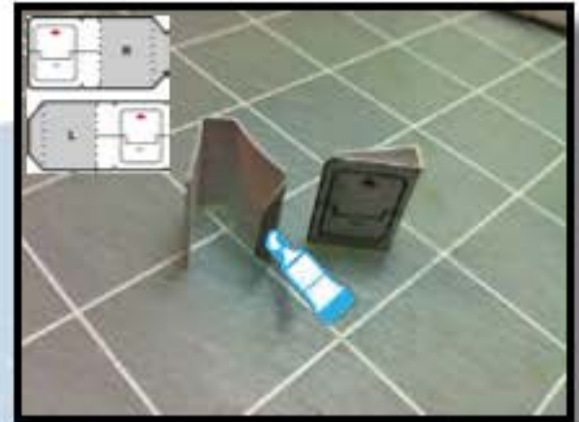










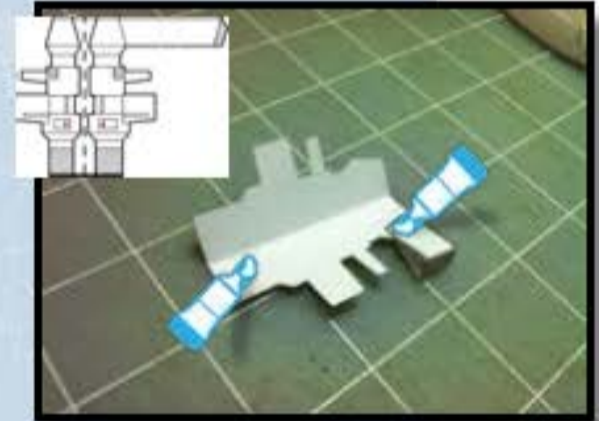
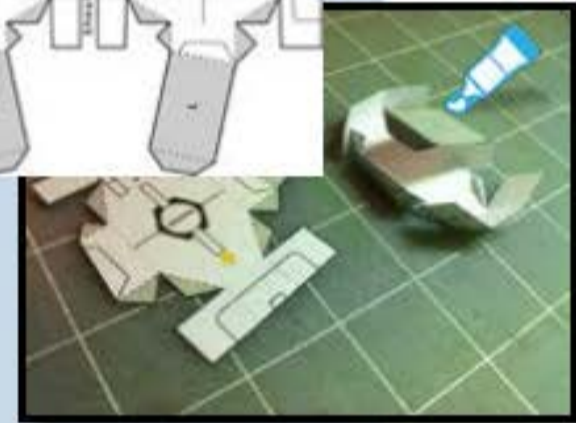
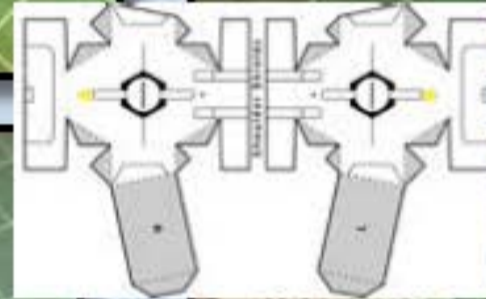
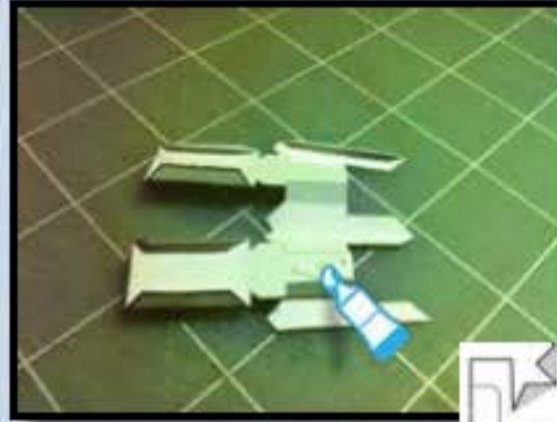
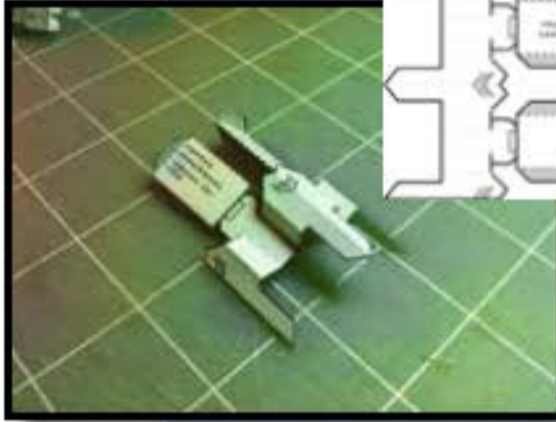
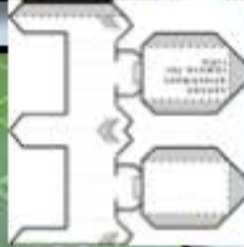
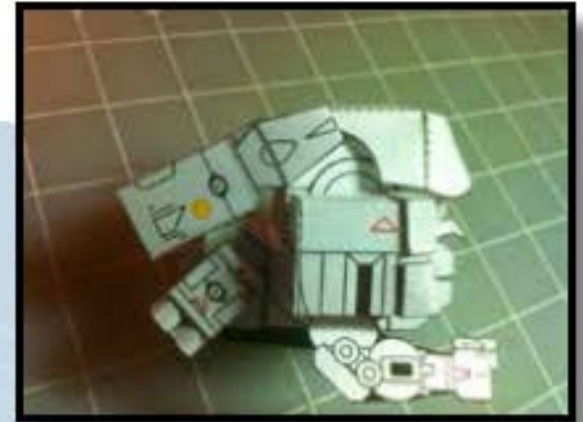
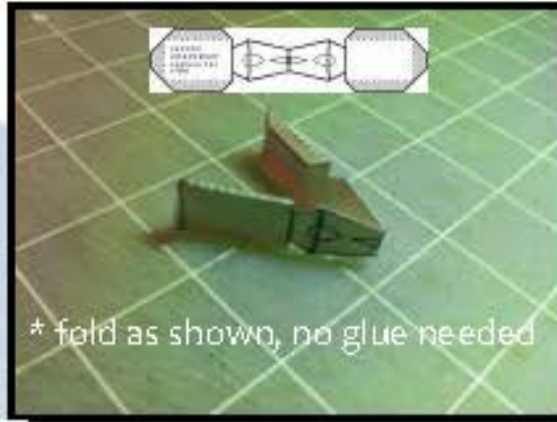




\* cannon barrels assemble the same as the booster exhausts



\* fold as shown, no glue needed



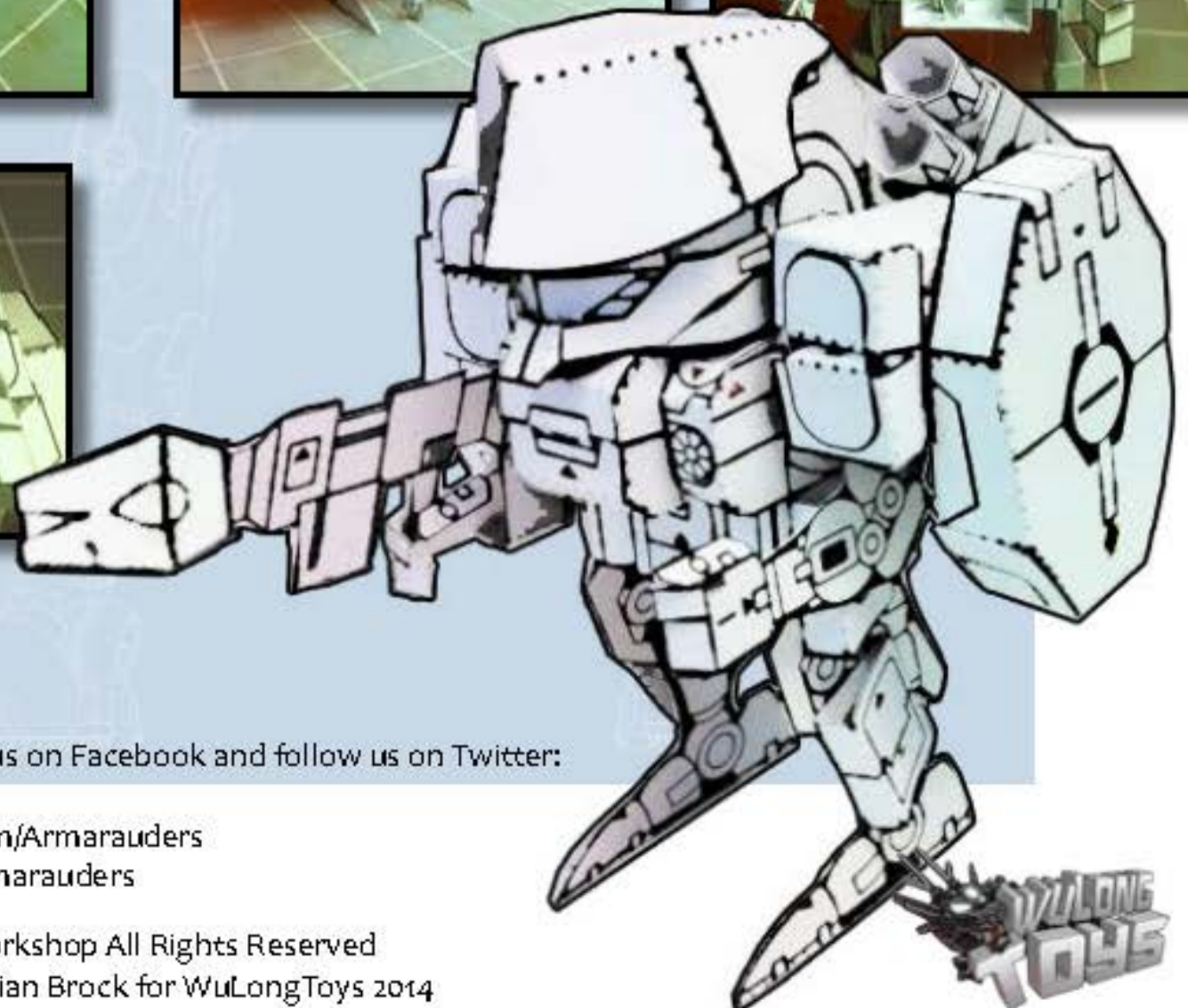
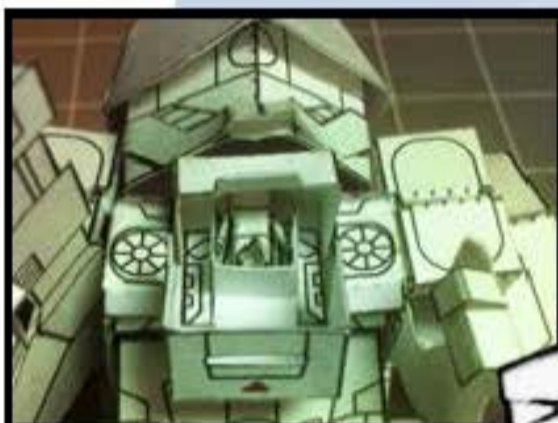
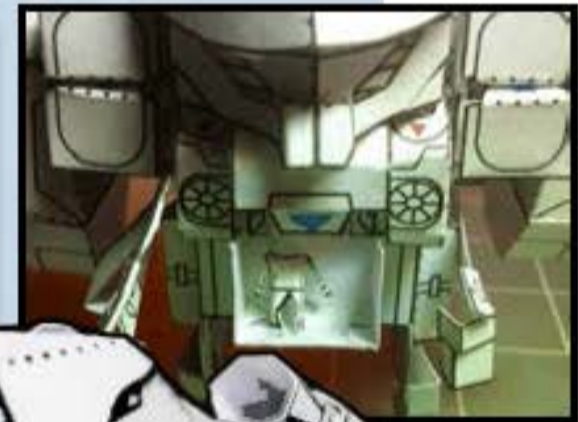
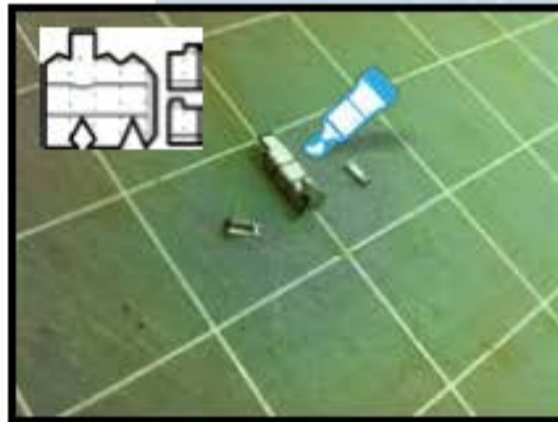
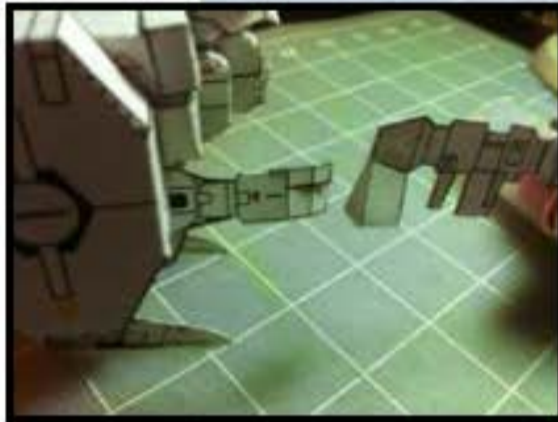
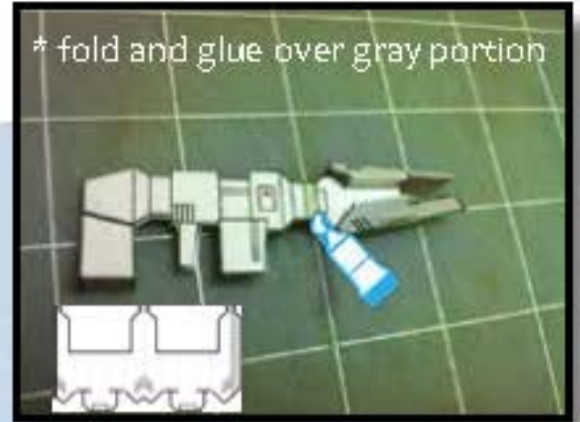
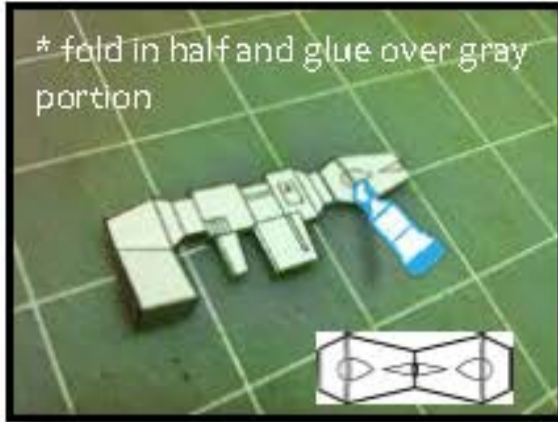
\* trim excess off the top



\* rifle options







For more Armarauders™ visit us on Facebook and follow us on Twitter:

Facebook: [www.facebook.com/Armarauders](http://www.facebook.com/Armarauders)

Twitter: [www.twitter.com/Armarauders](http://www.twitter.com/Armarauders)

Armarauders™ ©2012 Mecha Workshop All Rights Reserved  
Paper Model designed by Christian Brock for WuLongToys 2014

